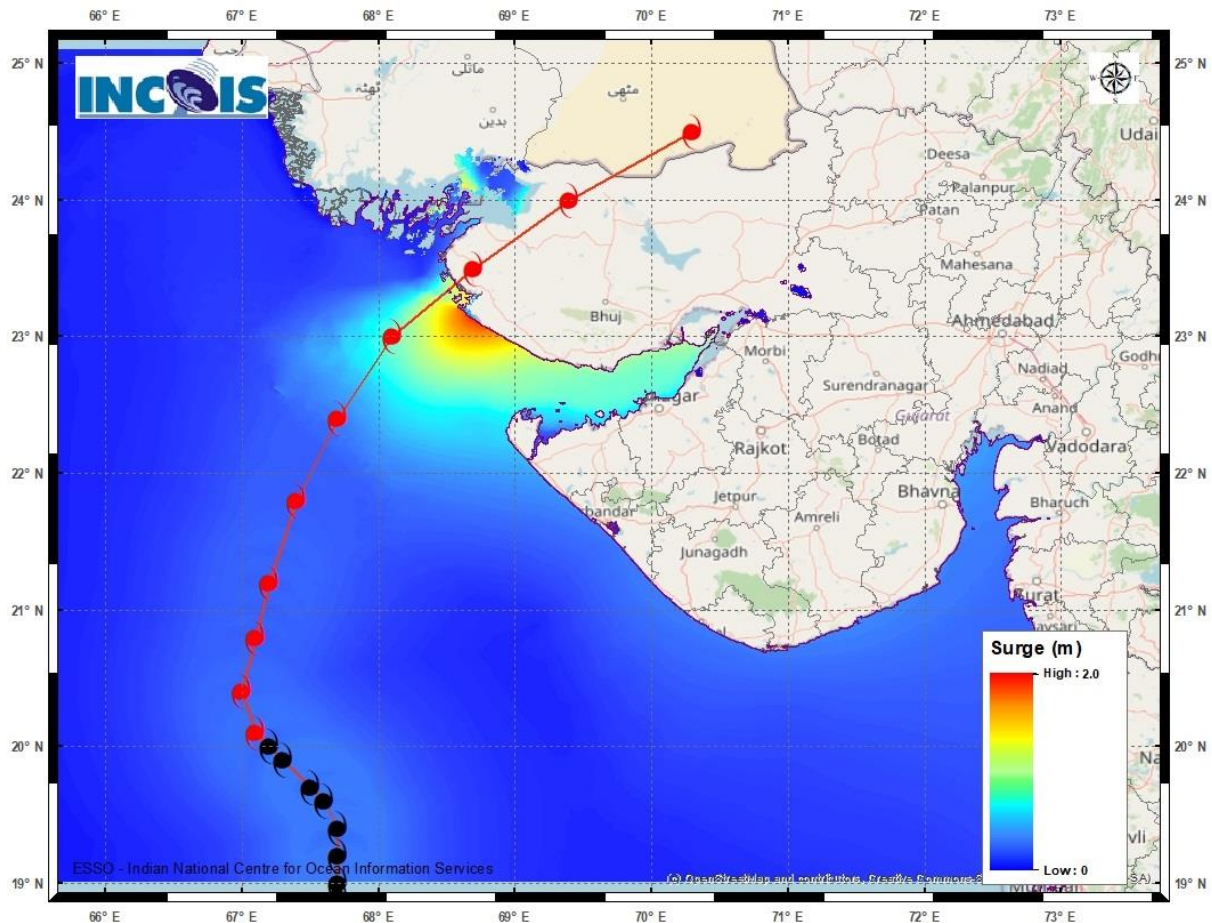


STORM SURGE GUIDANCE BASED ON 03UTC OF 13TH JUNE, 2023

Storm Surge Warning (Kutch, Devbhumi Dwarka, Porbandar, Jamnagarh and Morbi districts)

Storm surge of about 2 -3 m above the astronomical tide is likely to inundate the low lying areas of above districts during the time of landfall. The astronomical tides along these districts could be upto 3-6 meters in different places.



ASTRONOMICAL TIDE ON 15TH JUNE 2023		
STATION	TIME (IST)	HEIGHT (M)
PORBANDAR	09:37	2.61
NAVLAKHI	13:38	7.54
OKHA	11:36	3.74
DEENDAYAL PORT (KANDLA)	13:02	6.79